

TEXTILE CRESCENT WAREHOUSE

MODE
DESIGN

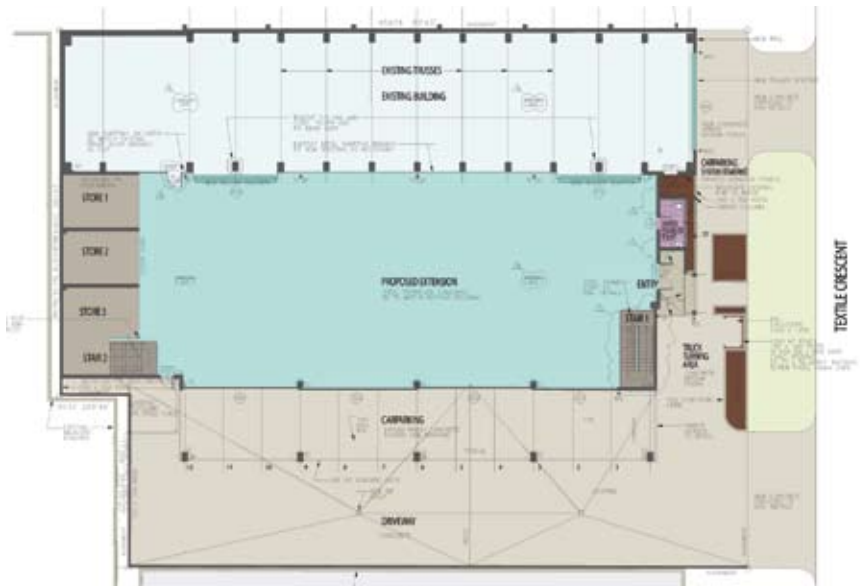
MANNER. METHOD. FORM.



Textile Crescent Warehouse

This industrial development extended an existing steel fabrication factory to incorporate a nine-metre clear height warehouse facility.

The site of the building utilises an operable wall system that allows twenty metre long access for unloading of semi-trailers and high bodied trucks in an undercover situation.



Project Details

Client: -
Location: Salisbury, QLD
Type: Industrial/Architecture
Completion Date: 2004